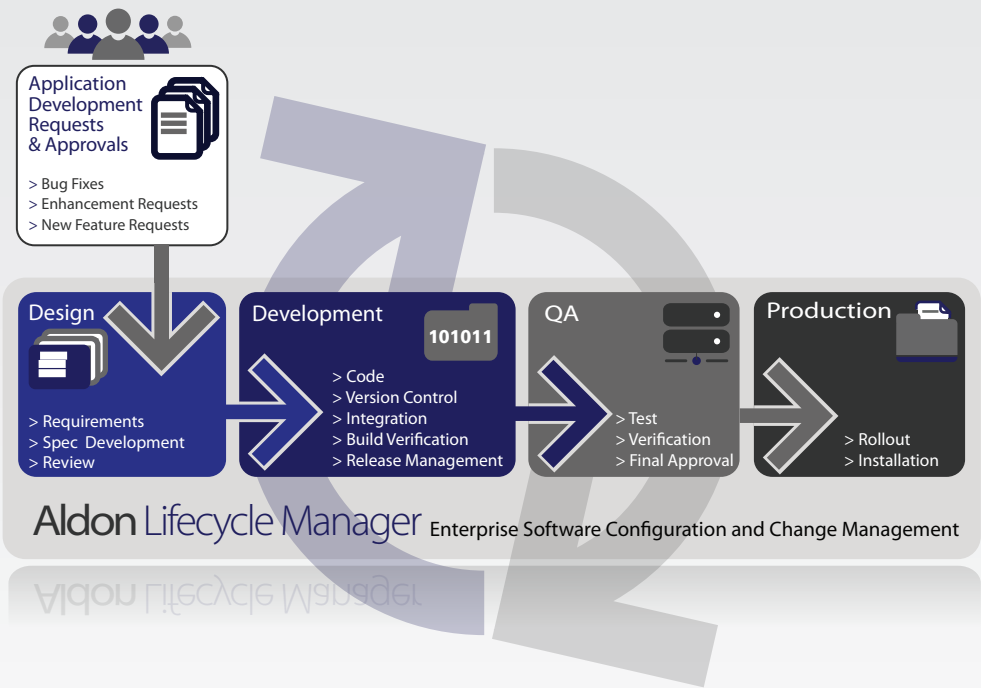


Aldon Lifecycle Manager™

- Enforces and streamlines compliance requirements
- Automates development processes, increase quality levels
- Easily monitors and manages multiple, geographically distributed and outsourced project teams
- Simplifies maintenance development
- Secures software assets
- Ensures quality level software with comprehensive build release management
- Supports all platforms with flexible architecture for IDE integration



Total Software Change Management from Change Requests to Production

Aldon Lifecycle Manager is a software configuration and change management solution for enterprise applications. Aldon Lifecycle Manager automates and streamlines the entire software development process, providing visibility and control required in an enterprise environment—increasing developer productivity, improving code quality, and meeting regulatory and best practices requirements.

With Aldon Lifecycle Manager, you can automatically track and accelerate the management of all your software and maintenance processes and workflows from design to production. Aldon Lifecycle Manager keeps you in control of all parts of the application development lifecycle while increasing your developers' productivity so that you can deploy IT projects on time. Our products offer you complete change and release management for software development in any environment—Windows, Unix, Linux, and the IBM i platform. Its comprehensive activity tracking and performance reporting provide management with the input and feedback needed to optimize IT's responsiveness.

From the moment a change is requested or an enhancement is filed, you are in total control of your application development lifecycle and software change management. What's more, Aldon Lifecycle Manager provides you with a means to easily keep compliant, from user request through release to production, so passing an IT audit is never a problem.

Aldon Lifecycle Manager

automate. change. manage.

Enforces and streamlines compliance requirements >

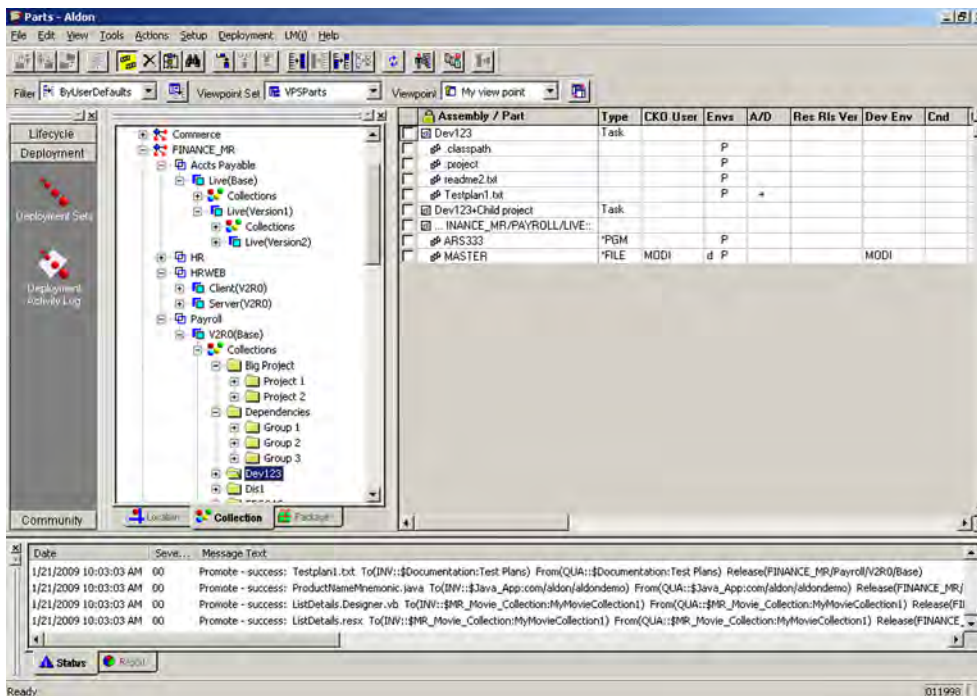
Aldon Lifecycle Manager enables managers to quickly and consistently respond to internal regulations and legislated standards in parallel with the software development process. For each application, management can define a process to ensure that components automatically pass through the defined phases, and that company policies and government legislation are enforced. Aldon reduces the administrative burden on developers by automating compliance requirements so developers are not delayed or distracted by mundane tasks.

Automates development processes, increase quality levels >

Aldon Lifecycle Manager streamlines the application development process to improve code quality. The automatic promotion process eliminates the manual movement of files, rebuilding of indexes and objects, and updating of data libraries, virtually reducing the chance for errors. Aldon Lifecycle Manager will even create an archive copy if desired. The promotion process can be controlled via role-based security, ensuring that code can't be promoted without the proper authorization.

Easily monitors and manages multiple, geographically distributed and outsourced development teams >

Aldon Lifecycle Manager enables fine-grained control of geographically distributed and outsourced development teams. Specific releases and modules can be easily created for use by distinct teams, limiting the accessibility of code to outside teams. Outsourced development is relegated to its own environment, separated from in-house development, to be merged when appropriate. Unauthorized access to the code base is prevented through role-based security. Aldon provides the control and management essential for successful distributed development.



Aldon Lifecycle Manager's Group/Application/Release structure showing nested projects and tasks and the stage of the assembly/part within the application's lifecycle.

[Simplifies multiple releases >](#)

Coordinating the development of multiple releases is a common but complex task. Aldon Lifecycle Manager simplifies the process by specifying and defining multiple releases through its release management capabilities. Updates are synchronized automatically between these releases, eliminating manual processing of files and errors inherent with manual processes.

[Secures Software Assets >](#)

Aldon Lifecycle Manager's security features provide powerful authorization and authentication. Users are grouped into roles, such as engineers, development managers or senior IT managers, and are granted varying levels of authority, providing more control over access usage than ever before.

[Achieves Flexible IDE Integration and Multi-Platform Development >](#)

Aldon Lifecycle Manager's flexible architecture supports even the most complex environments. Through Aldon's ongoing support of technical standards such as Eclipse and SCCI, users have the flexibility to choose the best tools for their IT needs. Further, Aldon provides automation, management and visibility of development across all platforms. Development teams can focus on project deliverables, avoid unnecessary disruption and continue to operate within their environments of choice.

[Automates Deployment >](#)

Deployment of applications and files is usually a manual process prone to error. Aldon Lifecycle Manager works with Aldon Deployment Manager at each stage of the lifecycle to gather, package, distribute and install application components. A management console allows users to carefully track and govern distributed packages. For multi-platform distributed environments, Aldon Deployment Manager eliminates the need for complex scripts, dramatically simplifying deployment.

How

How Aldon Lifecycle Manager Works >

After all applications, codes, files, and projects are placed in Aldon Lifecycle Manager's central repository, our software tracks the status at anytime. For software development, when you check an object out, it can be tracked throughout its entire lifecycle. With the associated assigned permissions, you can promote applications components throughout the development lifecycle (i.e. development, testing, production, etc.) and Aldon Lifecycle Manager will track it. In addition, the application components can be automatically deployed at each stage of the lifecycle. At each stage, Aldon Lifecycle Manager logs all activities and assures only approved users perform any operation.

tech specs



[Client Requirements >](#)

Microsoft Windows 2000, XP, or Vista

[Server Requirements >](#)

For Linux Operating Systems:

Red Hat Enterprise Linux Version 4 or higher
SUSE Linux 9, Service Pack 3

IBM DB2 Express-C Database Version 8.2 (standard configuration; installed with the package)

For IBM i Operating Systems:

IBM i 5.3 and higher

Additional Software:

IBM Java Software Development Kit 1.4.2 or higher (installed with the package)

Apache Software Foundation Jakarta Tomcat Version 4.1 or higher

Corporate Headquarters >

6001 Shellmound Street
Suite 600
Emeryville, CA 94608-1901
U.S.A.

☎ +1.510.839.3535

☎ +1.800.825.5858 toll free

☎ +1.510.839.2895

🌐 www.aldon.com

✉ info@aldon.com

International Headquarters >

5650 Yonge Street
Suite 1500
Toronto, Ontario M2M 4G3
Canada

☎ +1.416.226.7358

☎ +1.416.398.3830

🌐 www.aldon.com

✉ info@aldon.com

